

PRODUCING TRUST IN FIRE AND SAFETY



CERTIFIED FIRE HYDRANT SYSTEM



www.sffecoglobal.com

A PRODUCT OF



SFFECO with its more than 30 years of experience has always been a progressive organization that has remained in the forefront of the fire fighting industry with innovative, re-engineered and unique products.

SFFECO in its state-of-the-art manufacturing plants in RIYADH & DUBAI works in close connections with renowned governmental and certification bodies to provide key answers to the challenges faced by the society.

SFFECO brings together over 3-Decades of expertise and experience in form of Design, Consultancy, Testing, Commissioning, Maintenance & Refurbishment of fire protection and fire fighting systems.



SFFECO is proud to be working with International certification bodies. For specific product certifications, please check the respective product page or contact our sales team.



SFFECO designs and manufactures multi types of fire hydrants & systems to be lasting and robust to ensure that they function in all weather conditions. SFFECO Fire Hydrants are certified by UL, FM and LPCB. We also manufacture and customize fire hydrants based on your specific requirements.

- DRY BARREL HYDRANT
- WET BARREL HYDRANT
- ANTI THEFT HYDRANT
- SPECIAL APPLICATION HYDRANT
- HYDRANT CABINETS

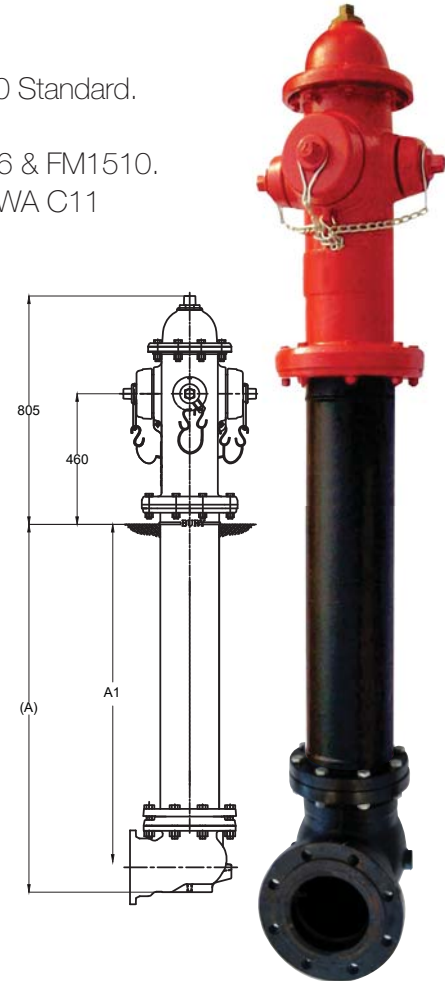


HYDRANT DRY BARREL



KEY FEATURES

- UL listed (EX16453) and FM Approved, Conforms to UL 246 and FM 1510 Standard.
- Hydrant Available in 6" inlet size.
- Working pressure of 250Psig and test pressure of 1000 Psig as per UL246 & FM1510.
- Flanges conform to ANSI B16.42 class 150, ANSI B16.1 class 125 & AWWA C11 Mechanical Joint Configuration.
- Break away design to prevent accidents to the hydrants, where only the upper part of the flange would be broken upon impact.
- Automatic drain system drains the water in the upper part when the main valve is closed, thus avoiding damage caused by freezing.
- Hydrant Body (Lower, Middle and Upper body) is of ductile iron.
- Meet all applicable parts of ANSI/AWWA C502 standard.
- Nozzle threads conforms to NFPA 1963 Standard.
- Efficient hydraulic design provides optimum performance & maximum flow.
- Easily removable main valve from either the bonnet or ground line flange.
- Threaded & Field replaceable hose nozzles & pumper outlet
- Ease of operation by anti-friction washer and forced lubrication.
- Epoxy lined hydrant shoe and nozzle section.
- Hydrant may be supplied with a 3 or 4 in. flanged monitor elbow.
- Hydrants are designed for high performance and easy to install, maintain and repair.
- Painting: Epoxy/Poly urethane painting with average thickness of 75 microns, RAL3000
(other thickness & fusion bonded epoxy are available upon request).



MODEL	BURIED DEPTH (mm±5)(A)	BURIED DEPTH (Feet - Inch)(A)
* SF-F-06	915	3'-0"
* SF-F-06, SF-F-06A, SF-F-06AF, SF-F-06B, SF-F-06BF	1063	3'-6"
* SF-F-06, SF-F-06A, SF-F-06AF, SF-F-06B, SF-F-06BF	1215	4'-0"
** SF-F-06, SF-F-06A, SF-F-06AF, SF-F-06B, SF-F-06BF	1368	4'-6"
** SF-F-06, SF-F-06A, SF-F-06AF, SF-F-06B, SF-F-06BF	1520	5'-0"
** SF-F-06, SF-F-06A, SF-F-06AF, SF-F-06B, SF-F-06BF	1673	5'-6"
** SF-F-06, SF-F-06A, SF-F-06AF, SF-F-06B, SF-F-06BF	1825	6'-0"
** SF-F-06, SF-F-06A, SF-F-06AF, SF-F-06B, SF-F-06BF	1978	6'-6"
** SF-F-06A, SF-F-06AF, SF-F-06B, SF-F-06BF	2130	7'-0"

* Standard Models (Subject to stock availability).

** Available upon customer's request only.

*** Monitor elbow is not available in "FM"

Dimension (A) Refers to Model SF-F-06,
Dimension (A1) Refers to Models SF-F-06A/AF/B/BF

MODEL	CERTIFICATION	HOSE OUTLET		PUMPER OUTLET		RATED PRESSURE PSIG
		NO OF OUTLETS	OUTLET SIZE IN INCHES	NO OF OUTLETS	OUTLET SIZE IN INCHES	
SF-F-06	UL/FM	2	2-1/2	1	4, 4-1/2, 5 NST Pumper connection or 5 nonthreaded Storz	250
***SF-F-06	UL/FM	2	2-1/2	0	-	250
***SF-F-06	UL/FM	4	2-1/2	0	-	250
SF-F-06	UL	2	2-1/2	2	4, 4-1/2, 5 NST Pumper connection or 5 nonthreaded Storz	250
SF-F-06	UL/FM	3	2-1/2	1	4, 4-1/2, 5 NST Pumper connection or 5 nonthreaded Storz	250
SF-F-06A	UL/FM	2	2-1/2	1	4-1/2 (NH threads and other types available upon request)	250
SF-F-06AF	UL/FM	2	2-1/2	1	4-1/2 (NH threads and other types available upon request)	250
SF-F-06B	FM	2	2-1/2	1	4 (NH threads and other types available upon request)	250
SF-F-06BF	FM	2	2-1/2	1	4 (NH threads and other types available upon request)	250

Note: Model number SF-F-06A & SF-F-06B are with mechanical joint inlet connection and SF-F-06AF & SF-F-06BF are with ASME B16.5 Class 150 Flanged Joint Inlet Connection

Standard size - 2 number of 2-1/2" hose outlets, 1 Number of 4-1/2" Pumper connection. Other outlet sizes are available upon request only.



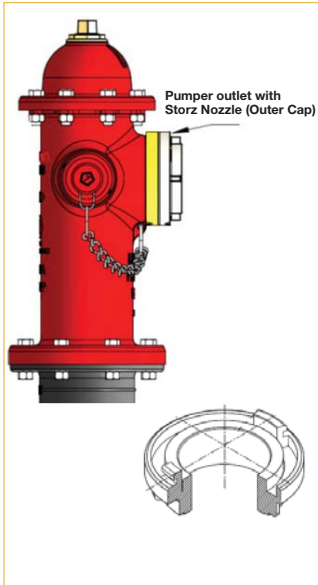
Note : Standard inlet-flange joint, mechanical joint available upon request..

HYDRANT DRY BARREL



OUTLET CONFIGURATION

Pumper Outlet :
Nonthreaded (STORZ)



Hydrant With 2 Hose
Outlets, 1 Pumper
Outlet.



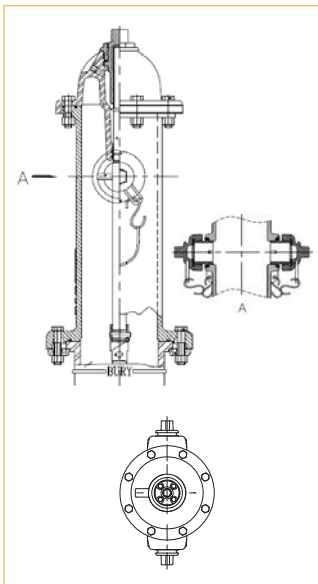
Hydrant with Flanged
Monitor Elbow (3" or 4")



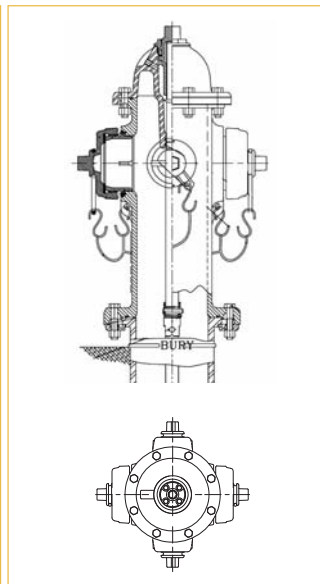
Mechanical Joint
Flange



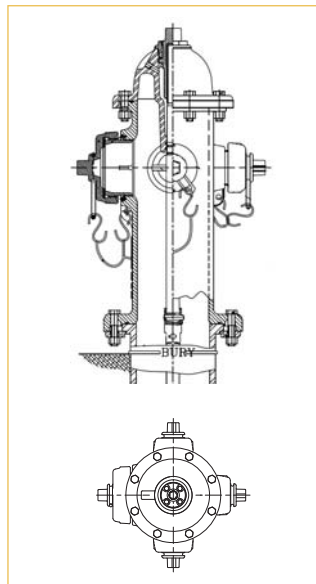
Hydrant with 2 hose
outlets, 0 pumper outlet.



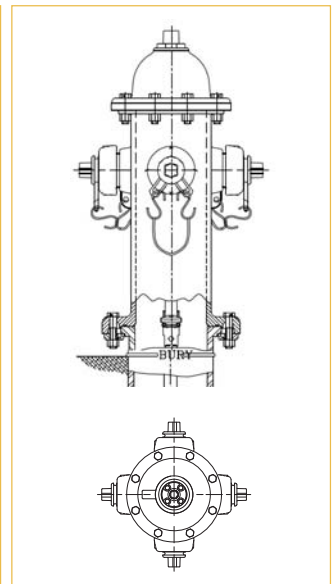
Hydrant With 2 Hose
Outlets, 2 Pumper Outlet



Hydrant With 3 Hose
Outlets, 1 Pumper Outlet



Hydrant With 4hose
Outlets, 0 Pumper Outlet



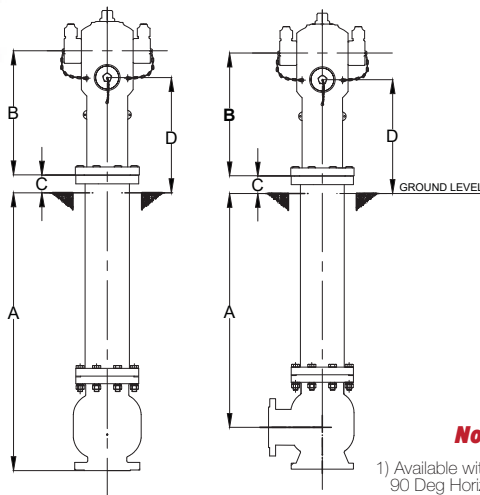
*Standard size - 2 number of 2-1/2" hose outlets, 1 Number of 4-1/2" Pumper connection. And others are available up on request only.

HYDRANT DRY BARREL



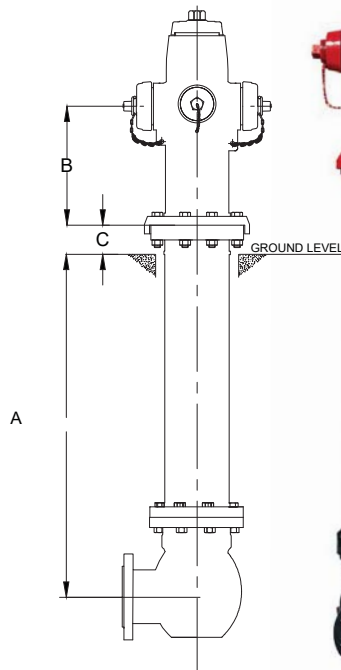
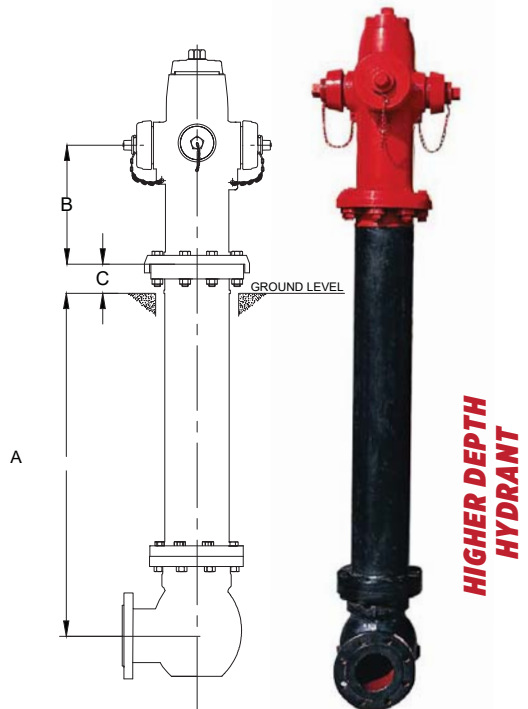
KEY FEATURES

- LPCB Approved, Conforms to BS EN 14384: 2005, BS 1074-1, BS 1074-2 & BS 1074-6 Standards.
- Hydrant Available in 4" and 6" inlet size.
- Working pressure of 16 Bar and test pressure of 25 Bar as per BS EN 14384: 2005
- Flanges conforms to EN1092-2 Standard.
- Break away design to prevent accidents to the hydrants, where only the upper part of the flange would be broken upon impact.
- Automatic drain system drains the water in the upper part when the main valve is closed, thus avoiding damage caused by freezing.
- Hydrant Body (Lower, Middle and Upper body) is of ductile iron.
- Efficient hydraulic design provides optimum performance & maximum flow.
- Easily removable main valve from the ground line flange.
- Threaded & Field replaceable hose nozzles & pumper outlet
- Available with Different type of caps and outlet landing valves.
- Hydrants are designed for high performance and easy to install, maintain and repair.
- Painting: Inside surface coated with non toxic epoxy paint not less than 300 microns. Outer surface above ground coated with epoxy paint not less than 300 microns (RAL 3000). Underground portion coated with asphalt not less than 300 microns (RAL 9005). Other thickness & fusion bonded epoxy are available upon request).



Notes:

- 1) Available with straight and 90 Deg Horizontal inlet, with different dimension.
- 2) Standard Size For higher depth hydrant: 2 nos. of 2.5" BSP hose outlets & 1 no. of 4" BSP pumper connection. with standard depth of 800/1200mm. Other options are available upon request.
- 3) Standard Size for Lower depth hydrant: 2 nos. of 2.5" BSP hose outlets & 1 no. of 4" BSP pumper connection with standard depth of 800mm. Other options are available upon request.
- 4) Lower Depth hydrants can be supplied without the barrel (upper body directly connects to lower body)



Description	Lower Depth Hydrant Details	
Model	SFH100-LPLD	SFH150-LPLD
Size	DN100 Flange (4")	DN150 Flange (6")
Buried Depth (mm) (A)	563/713/943 (For Straight inlet) 420/575/800 (For 90 Deg inlet)	563/713/943 (For Straight inlet) 420/575/800 (For 90 Deg inlet)
Upper body Outlet elevation (mm) (B)	423	423
Upper body flange clearance to ground level (mm) (C)	58	58
Upper body Pumper Outlet elevation (D)	353	353

Description	Higher Depth Hydrant Details.	
Model	SFH100-LPHD	SFH150-LPHD
Size	DN100 Flange (4")	DN150 Flange (6")
Buried Depth (mm) (A)	800/1200/1445	600/800/1200/1500/1700
Upper body Outlet elevation (mm) (B)	344	402
Upper body flange clearance to ground level (mm) (C)	77	77

LPCB APPROVED HYDRANT



Lower Depth Built-in coupling-Anti Theft Hydrant Details

Description	Lower Depth Built-in coupling Anti Theft Hydrant Details	
MODEL	SFH100-LPLDAT	SFH150-LPLDAT
Size	DN100 Flange (4")	DN150 Flange (6")
Buried Depth (mm) (A)	563/713/943 (For Straight inlet) 420/575/800 (For 90 Deg inlet)	563/713/943 (For Straight inlet) 420/575/800 (For 90 Deg inlet)
Upper body Outlet elevation (mm) (B)	423	423
Upper body flange clearance to ground level (mm) (C)	58	58
Upper body Pumper Outlet elevation (D)	353	353

Note: For dimension reference for A,B,C,D Refer previous page of Lower depth hydrant



Higher Depth Built-in coupling -Anti Theft Hydrant Details

Description	Higher Depth Built-in coupling - Anti Theft Hydrant Details	
MODEL	SFH100-LPHDAT	SFH150-LPHDAT
Size	DN100 Flange (4")	DN150 Flange (6")
Buried Depth (mm) (A)	800/1200/1445	600/800/1200/1500/1700
Upper body Outlet elevation (mm) (B)	327	381
Upper body flange clearance to ground level (mm) (C)	77	77

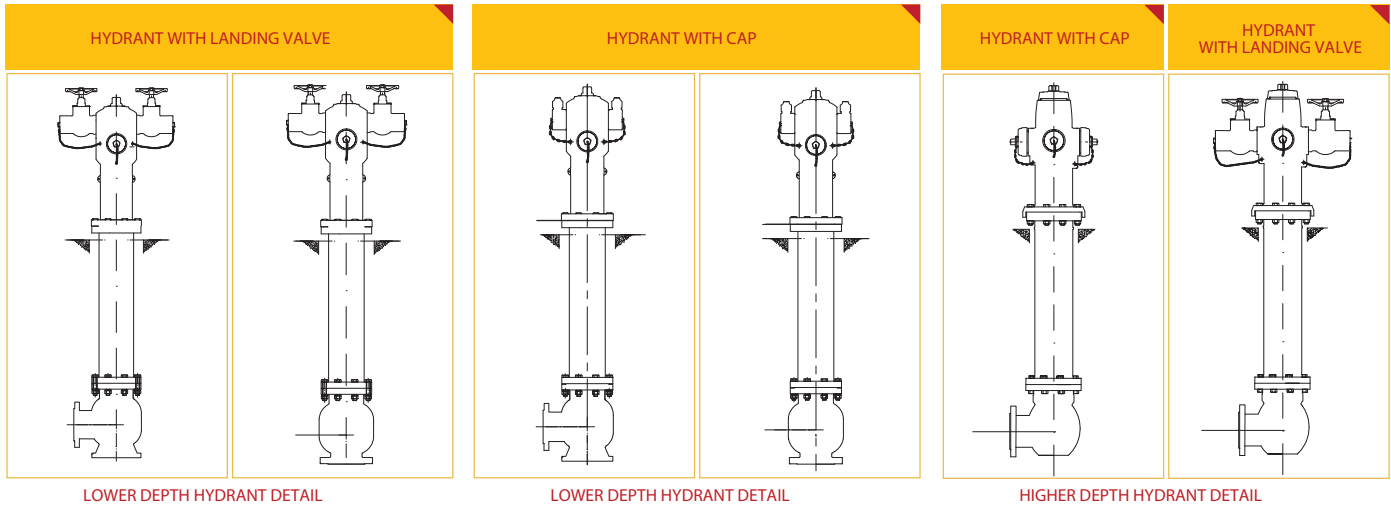
Note: For dimension reference for A,B,C Refer previous page of Higher depth hydrant



HYDRANT DRY BARREL



OUTLET CONFIGURATION



2.5" Hose outlet Details	
Description	Reference Standard
Connector,2.5"NH male thread,Brass	ASME B1.20.7-1991
Cap,2.5"NH female thread,Gray iron/Ductile iron/Brass	ANSI/NFPA 1963-1985
Connector,2.5"BSP male thread,aluminum	BS21.2779
DN65 storz adaptor & cap,Aluminum	STORZ 65
DN65 DSP adaptor with lock ring,aluminum	DSP 65
DN65 DSP adaptor & cap,Aluminum	
* DN65 landing valve,Bronze/Brass	BS 336
DN65 BS female adaptor,Aluminum/Brass/Brass coated Cr	

4" Pumper outlet details	
Description	Reference Standard
Connector,4"NH male thread,brass	ASME B1.20.7-1991
Cap,4"NH female thread,Gray iron/Ductile iron	ANSI/NFPA 1963-1985
Connector,4"BSP male thread,Brass/Aluminum	
* Cap,4"BSP female thread,gray iron	BS21.2779
Cap,4"BSP male thread,gray iron	
Connector,4"BSRT male thread,Brass/Brass plated Cr	BS336
Cap,4"BSRT female thread,Ductile iron/Gray/Gray iron plated Cr/Brass plated Cr	
Connector,4"BSRT female thread,Brass	
Cap,4"BSRT male thread,Ductile iron/Gray iron	
DN100 storz adaptor & Cap,Aluminum	STORZ 100
DN100 DSP adaptor with lock ring,aluminum	DSP 100
DN100 DSP adaptor & cap , Aluminum	

* Standard outlet types.
Other outlet details are optional and can be supplied at customer request.

HYDRANT WET BARREL



Working Pressure
250PSI for UL/FM Listed

KEY FEATURES

- UL listed (EX16453) and FM Approved, Conforms to UL 246 and FM 1511 Standard.
- Hydrant Available in 6" inlet size.
- Working pressure of 250Psig and test pressure of 1000 Psig as per UL246 & FM1511.
- Flanges conforms to ANSI B16.42 class 150 and ANSI B16.1 class 125
- Hydrant Body is of ductile iron.
- Meet all applicable parts of ANSI/AWWA C503 standard.
- Nozzle threads conforms to NFPA 1963 Standard.
- Efficient hydraulic design provides optimum performance & maximum flow.
- Hydrants are designed for high performance and easy to install, maintain and repair.
- Threaded & Field replaceable hose nozzles & pumper outlet
- Painting: For model SFD-250-WH: Interior and exterior is e-coated to a dry film thickness of 0.6 mils minimum, then fusion bonded epoxy powder coated (FBE) (Other thickness are available upon request). For model SFD-250-WH-1: Interior and exterior coated with polyurethane coating with 150 micron Minimum. (Other thickness are available upon request)

Hydrant with Monitor Flange



Hydrant without Monitor Flange



All Dimensions are measured in MM

Model	Certification	Hose Outlet		Pumper Outlet		Rated Pressure, PSIG
		No of Outlets	Outlet Size in inches	No of Outlets	Outlet Size in inches	
SFD-250-WH	UL/FM	2	2-1/2	-	-	250
SFD-250-WH	UL/FM	1	2-1/2	1	4 NST Pumper Connection	250
SFD-250-WH	UL/FM	2	2-1/2	1	4, 4-1/2 NST Pumper connection or 5 Non threaded storz	250
SFD-250-WH	UL	1	2-1/2	1	4-1/2 NST Pumper connection or 5 Non threaded storz	250

	Certification	Hose Outlet		Pumper Outlet		Rated Pressure, psig
		No of Outlets	Outlet Size in inches	No of Outlets	Outlet Size in inches	
SFD-250-WH-1	UL/FM	2	2-1/2	1	4-1/2	250
*SFD-250-WH-2	UL/FM	2	2-1/2	1	4-1/2	250
SFD-250-WH-3	UL/FM	2	2-1/2	1	4	250
*SFD-250-WH-4	UL/FM	2	2-1/2	1	4	250
SFD-250-WH-5	UL/FM	2	2-1/2	0	N/A	250
*SFD-250-WH-6	UL/FM	2	2-1/2	0	N/A	250
*SFD-250-WH-7	UL/FM	1	2-1/2	1	4-1/2	250
*SFD-250-WH-8	UL/FM	1	2-1/2	1	4-1/2	250
SFD-250-WH-9	UL/FM	1	2-1/2	1	4	250
*SFD-250-WH-10	UL/FM	1	2-1/2	1	4	250

Standard size - 2 number of 2-1/2 " hose outlets, 1 Number of 4-1/2" Pumper connection. Other optionals are available upon request.

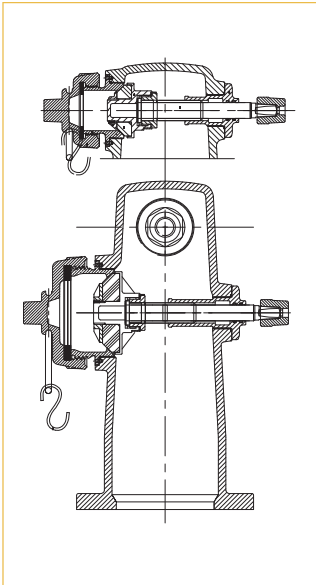
SFD-250-WH may be supplied with a 3" (UL) or 4" (UL/FM) size monitor flange on top of the hydrant.

HYDRANT WET BARREL

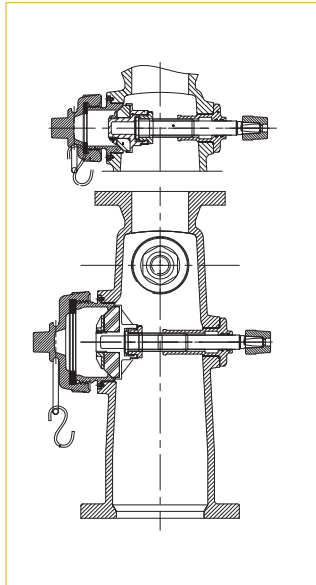


OUTLET CONFIGURATION

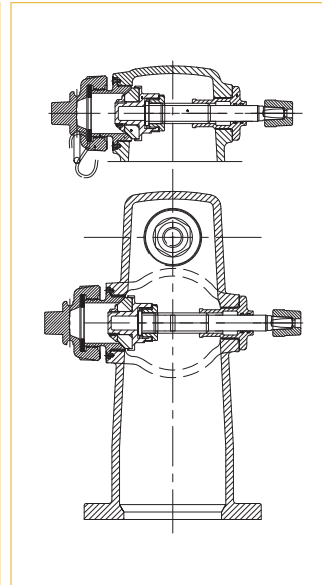
Hydrant With 1 Hose Outlets, 1 Pumper Outlet



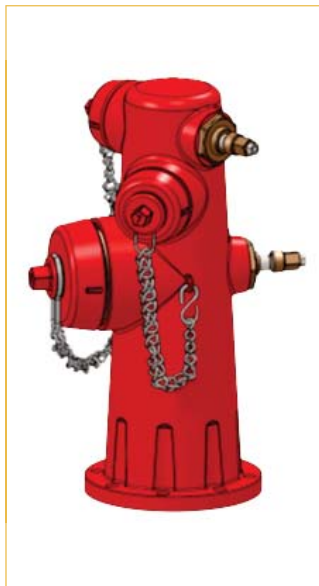
Hydrant With 1 Hose Outlets, 1 Pumper Outlet, With Monitor Flange



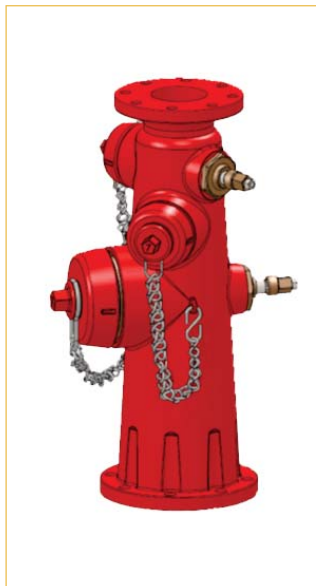
Hydrant with 2 hose outlets



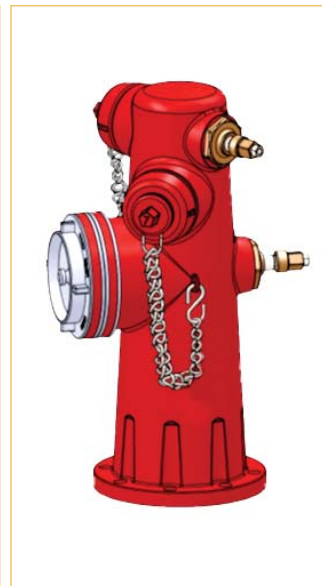
Hydrant With 2 Hose Outlets, 1 Pumper Outlet



Hydrant With 2 Hose Outlets, 1 Pumper Outlet, With Monitor Flange



Hydrant With 2 Hose Outlets, 1 Pumper Outlet Storz (Non Threaded)



HYDRANT DRY BARREL

ANTI THEFT HYDRANT

All Dimensions are measured in MM

KEY FEATURES

- New Developed with built-in ball valve and standard straight valve.
- Hydrant Available in 4" and 6" inlet size.
- Working pressure of 16 Bar and test pressure of 25 Bar.
- Flanges conforms to BS4504 Standard (ANSI/DIN Flange Available upon request)
- Break away design to prevent accidents to the hydrants, where only the upper part of the flange would be broken upon impact.
- Automatic drain system drains the water in the upper part when the main valve is closed, thus avoiding damage caused by freezing.
- Hydrant Body (Lower, Middle and Upper body) is of ductile iron. (Cast iron available up on request)
- Efficient hydraulic design provides optimum performance & maximum flow.
- Easily removable main valve from the ground line flange.
- Hydrants are designed for high performance and easy to install, maintain and repair.
- Painting: Buried part surface with RAL 9005 black paint, outside surface with RAL 3000 Paint.
- Approved by Royal Oman Police & PAWE Oman.



SPECIFICATION

MODEL	BURIED DEPTH (A)	UPPER BODY (B)	DIAMETER	ATTACHMENTS
SFH-100-CIV	1200 mm	669 mm	4" (100mm)	1 No. 4" Pumper connection female BSP+ 2 No. of Plug Outlet 2.5"BS336 Ductile iron with Ductile Cap inside built-in ball valve
SFH-150-CIV	1200 mm	669 mm	6" (150mm)	1 No. 4" Pumper connection female BSP+ 2 No. of Plug Outlet 2.5"BS336 Ductile iron with Ductile Cap inside built-in ball valve

Other depths are available upon customer's request.

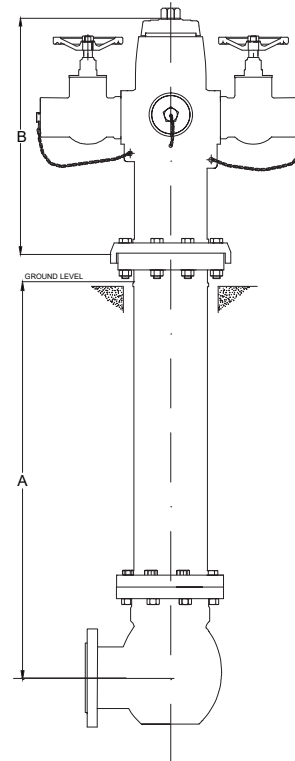
HYDRANT DRY BARREL

SPECIAL APPLICATION HYDRANT

All Dimensions are measured in MM

KEY FEATURES

- Hydrant Available in 4" and 6" inlet size.
- Working pressure of 16 Bar and test pressure of 25 Bar.
- Flanges conforms to BS4504 Standard (ANSI/DIN Flange Available upon request)
- Break away design to prevent accidents to the hydrants, where only the upper part of the flange would be broken upon impact.
- Automatic drain system drains the water in the upper part when the main valve is closed, thus avoiding damage caused by freezing.
- Hydrant Body (Lower, Middle and Upper body) is of ductile iron. (Cast iron available up on request)
- Efficient hydraulic design provides optimum performance & maximum flow.
- Easily removable main valve from the ground line flange.
- Hydrants are designed for high performance and easy to install, maintain and repair.
- Painting: Buried part surface with RAL 9005 black paint, outside surface with RAL 3000 Paint.



SPECIFICATION

MODEL	BURRIED DEPTH (A)	UPPER BODY (B)	DIAMETER	ATTACHMENTS
*100SFH800-CI	800 mm	600 mm	4" (100mm)	1 No. of 4" Pumper Connection & 2 Nos. of 2.5" Dia. Hose Outlet
*100SFH1200-CI	1200 mm	669 mm	4" (100mm)	1 No. of 4" Pumper Connection & 2 Nos. of 2.5" Dia. Hose Outlet
150SFH800-CI	800 mm	600 mm	6" (150mm)	1 No. of 4" Pumper Connection & 2 Nos. of 2.5" Dia. Hose Outlet
150SFH1200-CI	1200 mm	669 mm	6" (150mm)	1 No. of 4" Pumper Connection & 2 Nos. of 2.5" Dia. Hose Outlet

Other depths are available upon customer's request.

HYDRANT WET BARREL

SPECIAL APPLICATION HYDRANT

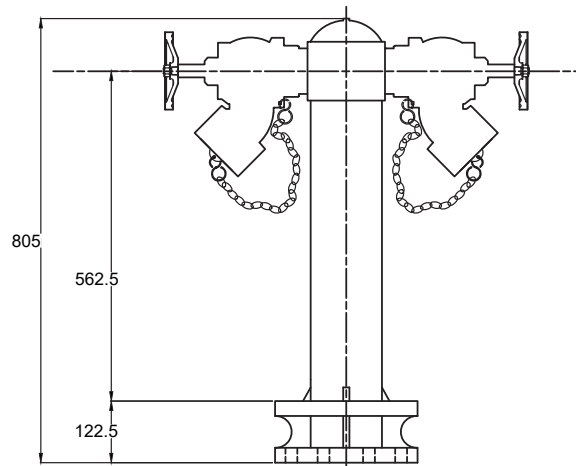


KEY FEATURES

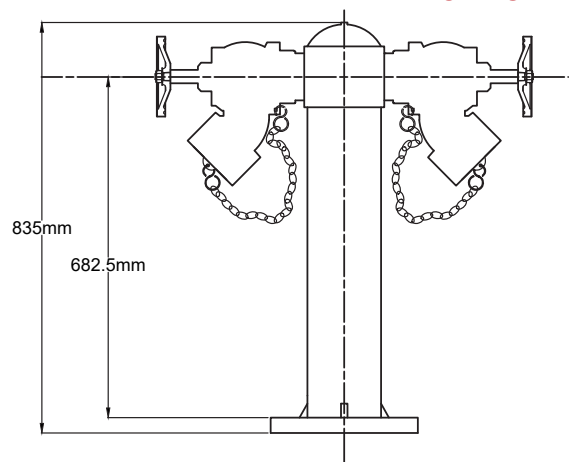
- Hydrant Available in 4" and 6" inlet size.
- Working pressure of 16 Bar and test pressure of 25 Bar.
- Flanges conforms to BS4504 Standard (ANSI/DIN Flange Available upon request)
- Hydrant Body is of Cast Iron.
- Ductile hydrants available upon request.
- Two numbers of 2½" hydrant landing valves with cap and chain are provided with hydrants.
- The valves are of BSPT threads inlets and PN16 rating.
- Other pressure ratings are available upon request.
- Efficient hydraulic design provides optimum performance & maximum flow.
- Hydrants are designed for high performance and easy to install, maintain and repair.
- Painting: Color RED RAL 3000.

MODELS

SFH – 50W/100 – 4"
SFH – 50W/150 – 6"



4 Inch
6 Inch



Wet fire hydrant is used in places where no danger of Vehicle accidents or freezing atmospheres. It is better to be used in malls, shopping centers, colleges, hospitals, etc.

HYDRANT CABINETS



SHC-800

Length	Width	Depth	Leg Height
1500mm	800mm	250mm	100mm

SHC-750

Length	Width	Depth	Leg Height
1000mm	800mm	250mm	600mm



Standard Accessories

- 2 pcs-Fire Hose Size 2.5"x100 feet synthetic rubber lined with Aluminum & morris coupling.
- 2 pcs-Hose Nozzle 2.5 morris coupling.
- 1 pc-Adjustable Hydrant Wrench
- 1 pc-Pin Lug Spanner Wrench
- Fire Axe
- 4 pcs-2.5" Rubber Gasket for Hose Couplings

Cabinet Design

- Cabinet doors are made from 1mm mild steel or stainless steel.
- Available in brushed, hairline or mirror finish (SS304 or SS316 Grade).
- Corrosion Protection-cabinets are painted with Electrostatic Powder Paint oven baked to protect against rust.
- Cabinet is designed to be weather-proof.
- All instructions are silk-screened on the Cabinet & No sticker applied.
- Other special series or equipment are available upon request.

Optional Accessories

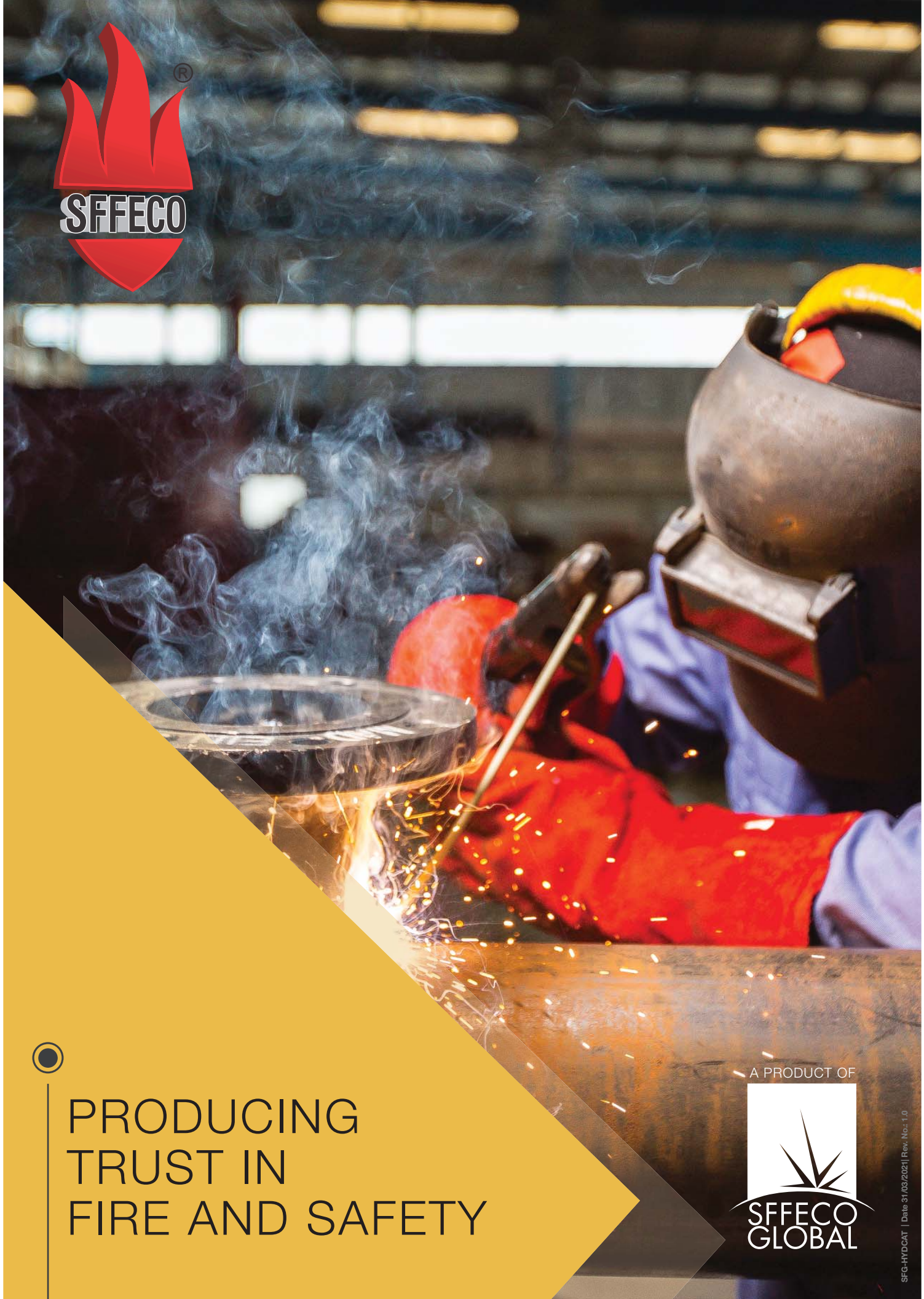
- Extra Fire hose 2.5" or 1.5". Double jacket Hoses.
- Crow Bar
- 2.5" Underwriters Play Pipe
- Flashing Light
- Torch
- Certified and Non certified Hoses are available upon request.

ORDERING FORM FIRE HYDRANTS



PARAMETER	FIRE HYDRANT SELECTION																	
QUANTITY	<input type="checkbox"/>																	
MODEL NUMBER	<input type="checkbox"/>																	
TYPE	<input type="checkbox"/> WET					<input type="checkbox"/> DRY												
APPROVAL	<input type="checkbox"/> UL	<input type="checkbox"/> FM	<input type="checkbox"/> UL-FM	<input type="checkbox"/> STANDARD		<input type="checkbox"/> LPCB	<input type="checkbox"/> UL	<input type="checkbox"/> FM	<input type="checkbox"/> UL-FM	<input type="checkbox"/> STANDARD								
HYDRANT SIZE	<input type="checkbox"/> 6 INCH		<input type="checkbox"/> 4 INCH	<input type="checkbox"/> 6 INCH		<input type="checkbox"/> 4 INCH	<input type="checkbox"/> 6 INCH		<input type="checkbox"/> 6 INCH		<input type="checkbox"/> 4 INCH	<input type="checkbox"/> 6 INCH						
BURRIED DEPTH	NOT APPLICABLE			NOT APPLICABLE			<input type="checkbox"/> 800mm	<input type="checkbox"/> 1200mm		OTHERS, SPECIFY		<input type="checkbox"/> 915mm	<input type="checkbox"/> 1220mm		OTHERS, SPECIFY			
HOSE OUTLET (NO. & SIZE)	# OUTLET :	SIZE ":		# OUTLET :	SIZE ":		# OUTLET :	SIZE ":		# OUTLET :	SIZE ":		# OUTLET :	SIZE ":				
PUMPER OUTLET (NO. & SIZE)	# PUMPER :	SIZE ":		# PUMPER :	SIZE ":		# PUMPER :	SIZE ":		# PUMPER :	SIZE ":		# PUMPER :	SIZE ":				
WITH MONITOR FLANGE	<input type="checkbox"/> YES		<input type="checkbox"/> NO		<input type="checkbox"/> NO			NOT APPLICABLE			<input type="checkbox"/> YES		<input type="checkbox"/> NO		<input type="checkbox"/> YES		<input type="checkbox"/> NO	
	IF YES, PLEASE SPECIFY		IF YES, PLEASE SPECIFY								IF YES, PLEASE SPECIFY		IF YES, PLEASE SPECIFY					
	<input type="checkbox"/> 3"		<input type="checkbox"/> 4"								<input type="checkbox"/> 3"		<input type="checkbox"/> 4"					
2.5" OUTLETS	<input type="checkbox"/> 2.5" LANDING VALVE			<input type="checkbox"/> 2.5" MORRIS ADAPTORS			<input type="checkbox"/> WITHOUT VALVES & ADAPTORS			<input type="checkbox"/> STANDARD		<input type="checkbox"/> OTHERS						
STRAIGHT OR 90 INLET FLANGE	NOT APPLICABLE			NOT APPLICABLE			<input type="checkbox"/> 90 INLET		<input type="checkbox"/> STRAIGHT		90 INLET							

OTHER SPECIAL REQUIREMENTS :



PRODUCING TRUST IN FIRE AND SAFETY

A PRODUCT OF



Follow us on Social Media



P.O.Box 261318
Jebel Ali Freezone
Dubai, U.A.E

T: +971 4 880 9890
F: +971 4 880 9822
E: sales@sffecoglobal.com
W: www.sffecoglobal.com



800 SFFECO
733326